

Cannabis & Drug Safety



MICHIGAN POISON & DRUG
INFORMATION CENTER
WAYNE STATE UNIVERSITY

Denise Kolakowski
Poison Center Educator

DISCLAIMER

There are no financial conflicts of interest associated with this presentation.



MICHIGAN POISON & DRUG
INFORMATION CENTER
WAYNE STATE UNIVERSITY

America's Poison Centers (APC)

55 nationally accredited poison centers throughout the U.S. and U.S. territories.

(Data reported for CY 2021)

- 2,080,917 Human Poison Exposures
- Cases originating from health care facilities (489,819)
- Children 5 years of age and under account for 41% of case calls (846,482)

Top 5 Substance Exposure Calls

- Analgesics: 11.2% (283,695)
- Cleaning Substances: 7.5% (189,182)
- Personal Care Products: 5.9% (148,558)
- Antidepressants : 5.6% (141,802)
- Antipsychotics/Sedatives: 4.7% (119,500)



Hot Topics in Toxicology (2021)

Cannabinoid Exposures

- 24,877 cases reported to America's Poison Centers (1.0%)
- 28 % of cases reported in children 5 years and under. (7,031)
- 19% of cases reported in youth 13-19 years of age. (4,684)

Fentanyl Exposures

- 0.3% of all exposures (7,072)
- 29% of cases reported for adults in 30's (2,075)
- 27% of cases reported for adults in 20's (1,912)
- 4% of cases reported in children 5 years and under (294)

Bupropion (Antidepressant)

- 0.7% of all exposures (18,106)
- 22% of cases reported for adults in 20's (3,913)
- 17% of cases reported for adults in 30's (3,133)
- 50% of deaths or major outcomes related to misuse occurred for teens and 20's (941)
- 1% of of major outcomes or deaths occurred in children under 5 years of age (25)



Facts on Cannabis

- Greenish-gray mixture of the dried flowers of Cannabis Sativa or Cannabis Indica
- Contains THC (Tetrahydrocannabinol)
- THC is a mind altering drug
- Main chemical that causes intoxication is Delta-9
- Over 500 chemicals in cannabis(resin) or cannabinoids

*National Institute on Drug Abuse, Marijuana Drug Facts, (Dec.2019)
<https://nida.nih.gov/publications/research-reports/marijuana/what-marijuana>

Cannabis Containing Products

- Cannabis cigarettes (joint)
- Oils
- Liquid
- Cannabis Edibles
- More....



Cannabis Edibles

- There is no known safe amount of THC found in edibles
 - Effects from THC depend on a persons age and health
- The amount of THC in edibles is not regulated by the FDA and concentrations can be high
- Amounts dispensed in Michigan are regulated by the Cannabis Regulatory Agency
- The U.S. Food & Drug Administration
 - Makes and enforces safety standards
 - Food
 - Medication





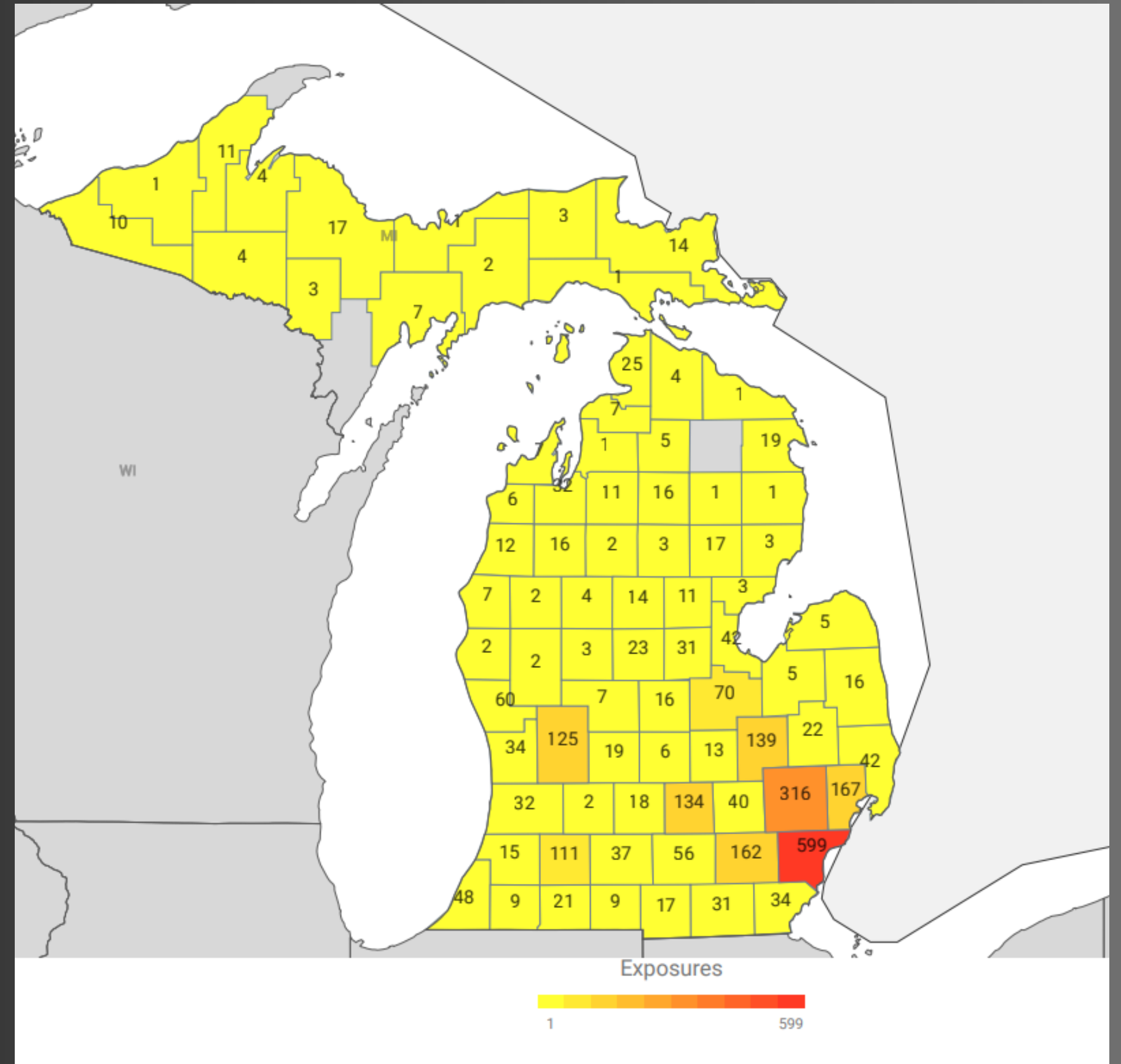
Cannabis Regulation in Michigan

- In 2019, use of cannabis became legal for recreational use by adults who are 21 years of age or older.
- There are limits on possession for adults 21 year or older who choose to use. (2.5 oz.- marijuana/15 gm-concentrate)
- Must have valid proof of age to purchase.
- Must be purchased legally at licensed dispensaries.
- CRA requires dispensaries to provide safety messaging and contact information for the Poison Helpline with purchases.

*Michigan Cannabis Regulatory Agency, Laws/Rules/Bulletins/Grants (2022)
<https://www.michigan.gov/mra/0,9306,7-386-82631---,00.html>

Michigan

Ages 0-17 years = 529



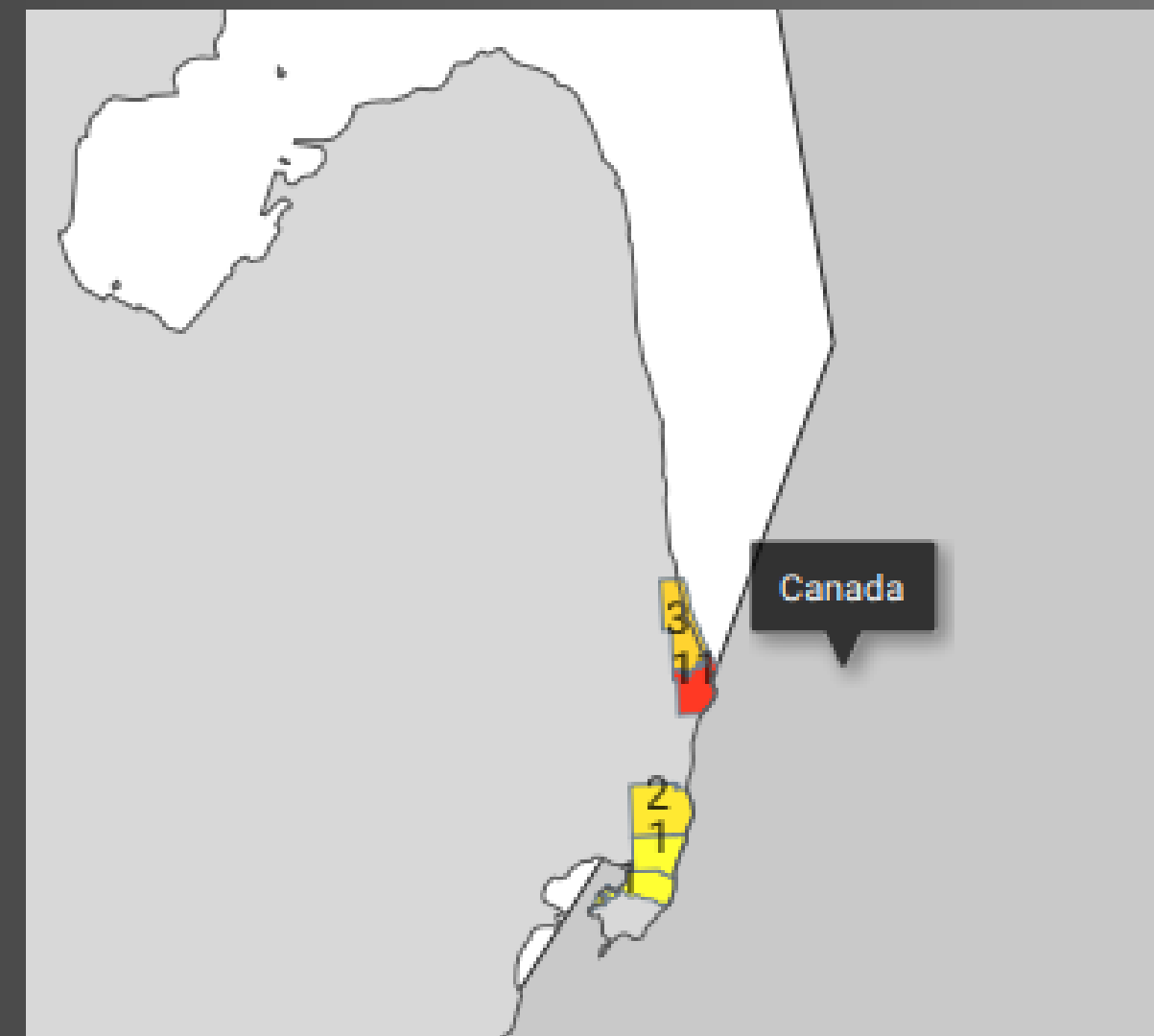
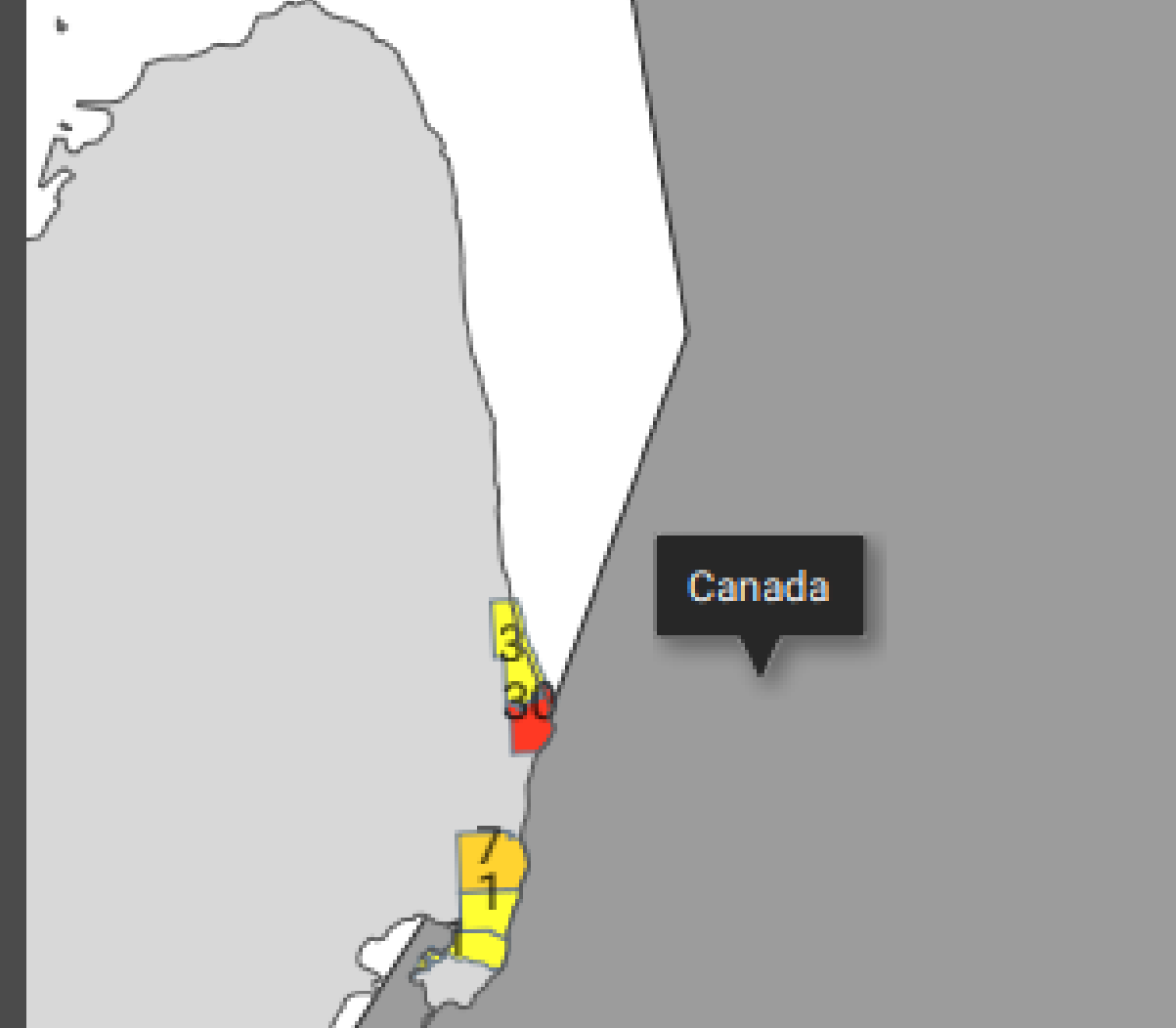
Reported Cannabis Exposures in St. Clair County, Michigan

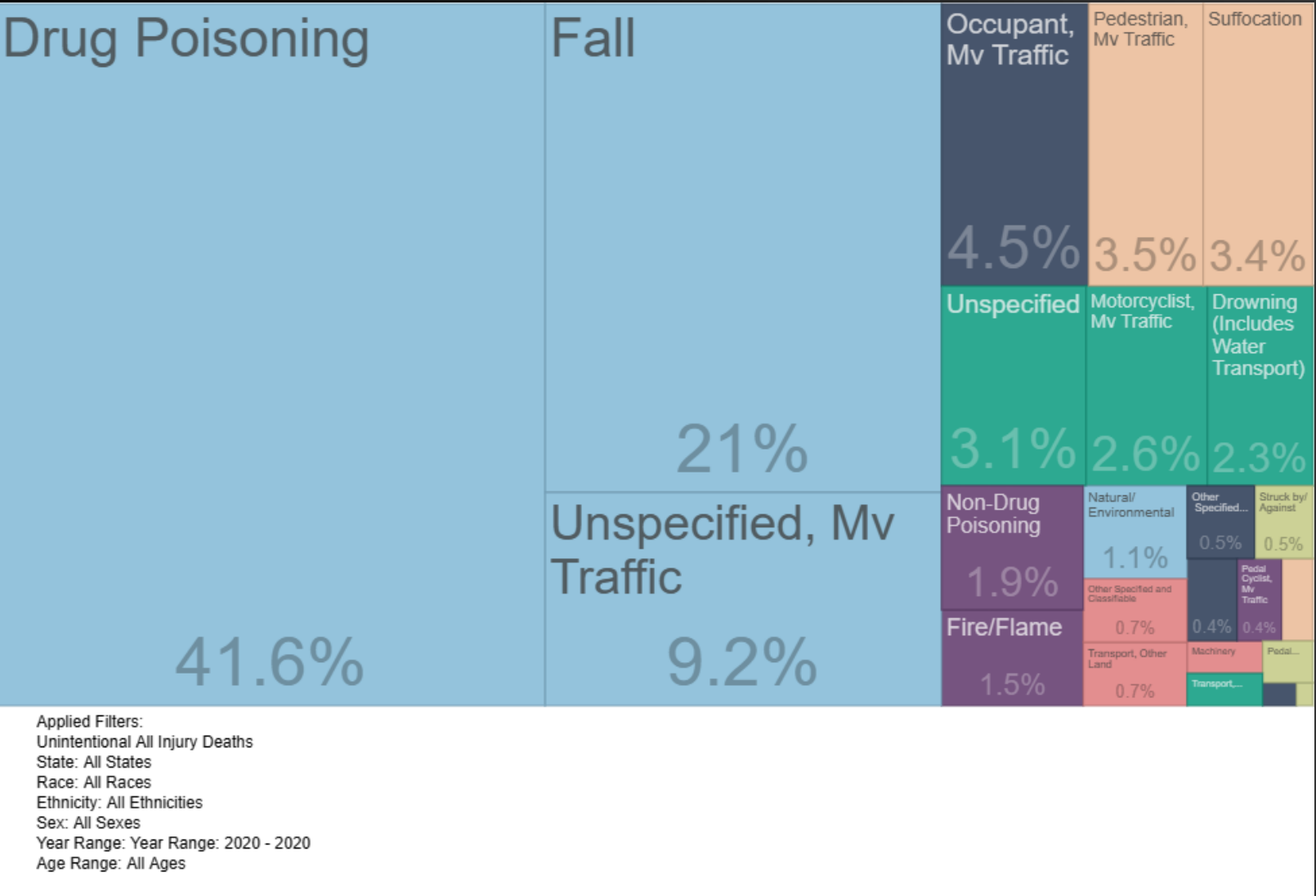
1/1/2020 through 12/31/2022

- Total Cases = 41
- Greatest concentration = 48060 (30)

CY 2022

- Total Cases = 17
- Greatest concentration = 48060 (11)





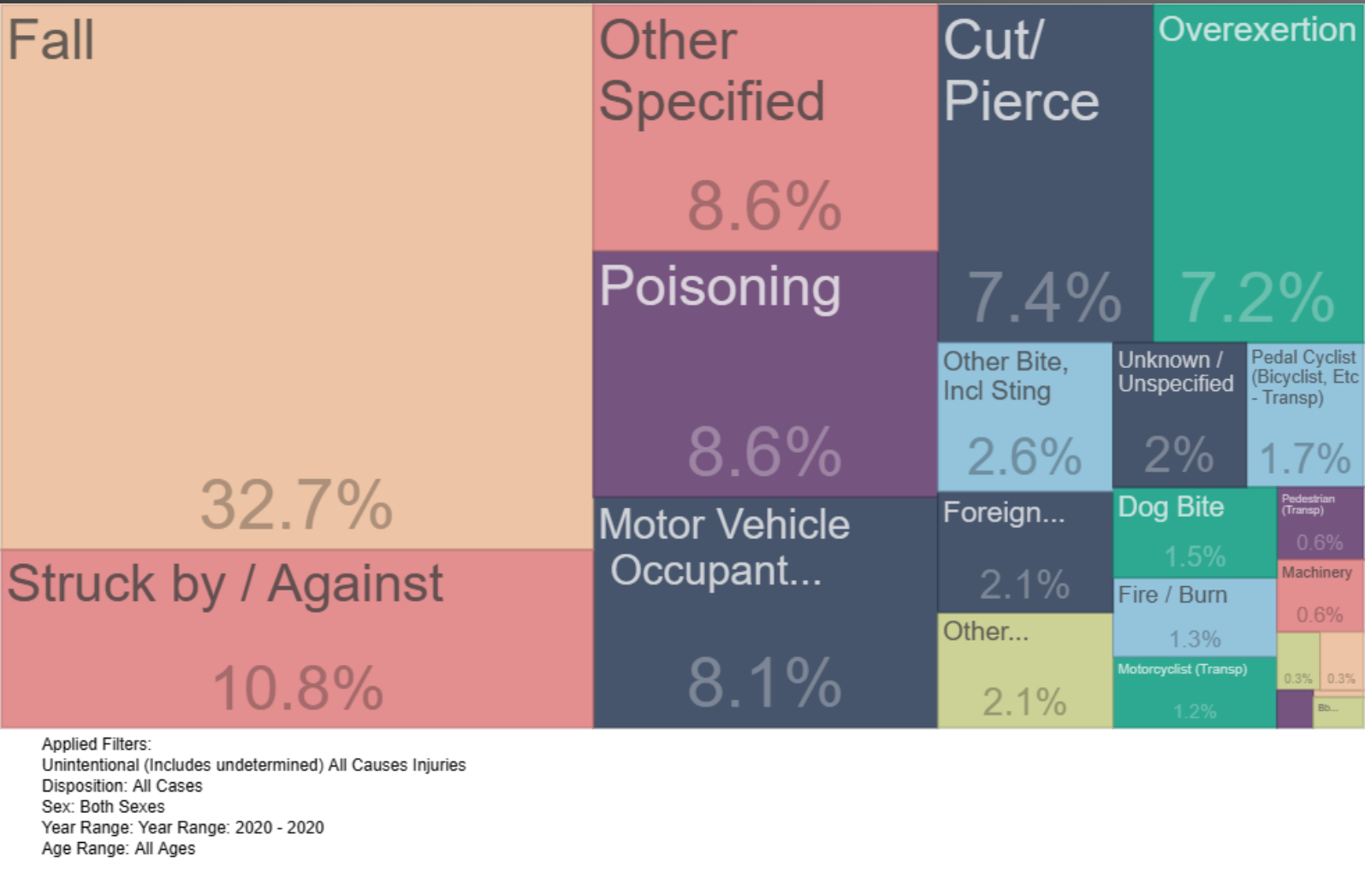
Injury Statistics

Fatal Injuries: Top 5 Causes


- **Drug poisoning**
- Falls
- Unspecified motor vehicle accidents
- Motor vehicle occupancy
- Unspecified

Non-Fatal Injuries: Top 5 Causes

- Falls
- Blunt trauma/ being struck or crushed
- Other specified reasons
- **Poisoning**
- Motor vehicle occupancy



[*https://www.cdc.gov/injury/wisqars/index.html.](https://www.cdc.gov/injury/wisqars/index.html)



Substance Safety & Poison Prevention



MICHIGAN POISON & DRUG
INFORMATION CENTER
WAYNE STATE UNIVERSITY



Substance Safety Starts at Home

Practice Good Safety Habits at Home:

- Everything has its place.
- Assure children cannot access products that could harm them if swallowed, inhaled, or touched.
- Pick up or clean up if dropped or spilled immediately.
- Lock it up!

Early Learning Can Lead to Safe Decisions:

- Teach children as soon as they can understand
 - Poison Centers provide early learning poison prevention education.
- Small children Do Not “know better”
 - Age of Reason= 7 years old

Storage

- Keep medication and recreational substances in locked cabinets, lock boxes, or locking bags when not in use.
- Locking devices should be installed and/or stored well above the reach of children.
- Keys and/or combinations to locking devices should only be accessible to those who are intended to use substances or prepare medication.
- Before storing substances or medication after use, be sure to engage "Child-Resistant" caps and closures properly.
- Never leave purses, backpacks, or tote bags on the floor or within reach of children or pets.



Medication Disposal

Disposing of medication properly decreases access to those it is not intended for.

- Do not flush medications down toilets or drains.
- Take unused or expired medications to drug take-back sites.
- Visit our medication safety page at www.mipoisonhelp.org/medication-safety or scan the QR code to access the EGLE Drug Take Back Map for sites throughout Michigan and other resources.



Substance & Drug Safety Away from Home

- Do not assume others will take precautions in their homes or establishments.
- Scan the floor for dropped medications and other risks to small children.
- Do not place medicine in diaper bags or other items that a child or others can access.
- For more advice call the Poison Help Hotline at 1-800-222-1222 Ext. 1 to speak with a Specialist in Poison Information or Ext.2 for the Poison Center Educator.

*There is no substitute for supervision by a responsible adult.



SAMHSA NSDUH Survey Results-2021

Substances Abuse

- 61.2 million people over 12 years of age used illicit drugs
- Opioids used by 9.2 million
- 46.3 million met DSM-5 criteria for substance use disorder
- Most did not receive treatment

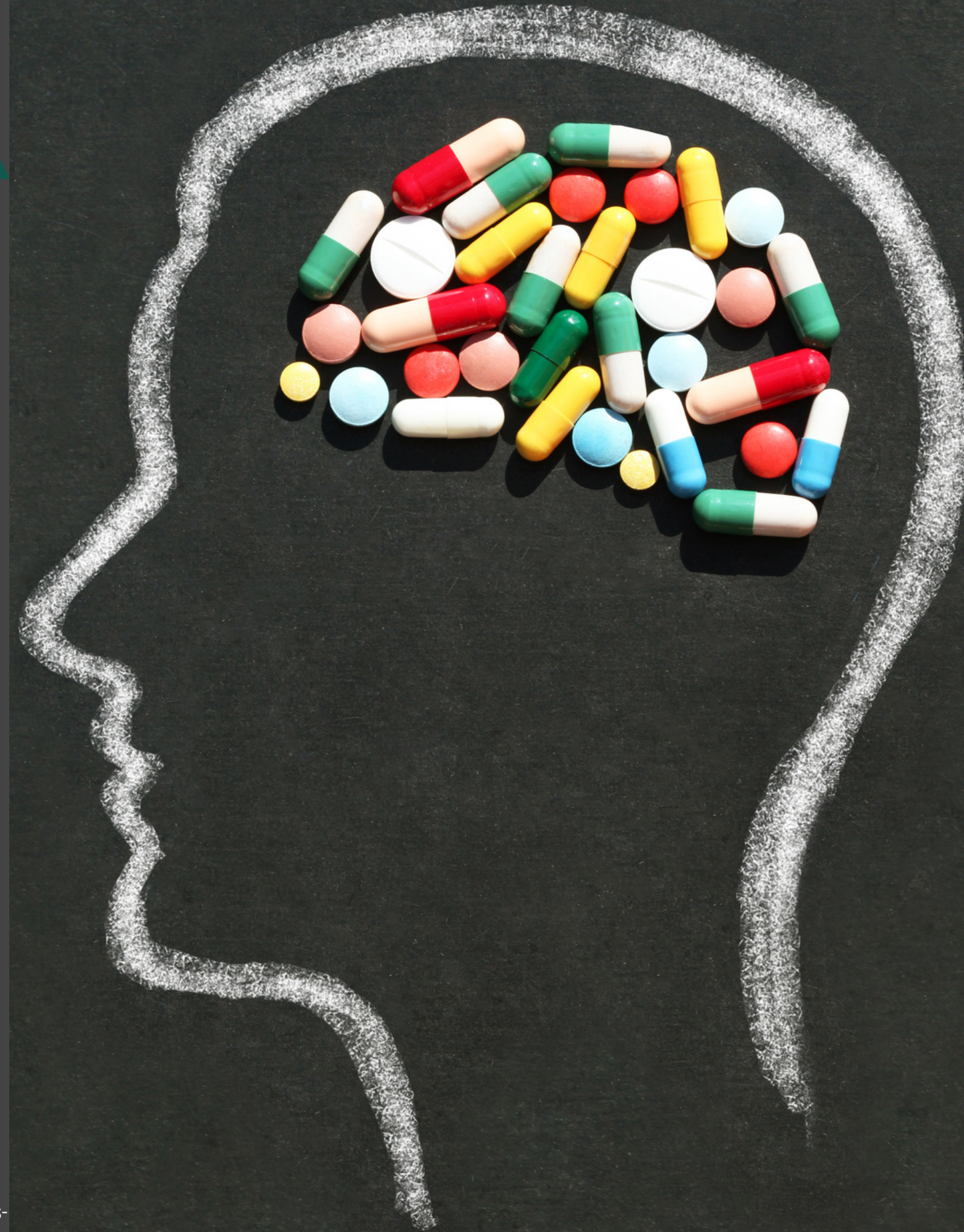
Co-occurrence of SUD and Mental Illness

- For ages 18-25 years 13.5 percent surveys were diagnosed with mental illness and SUD
- Criteria for SUD and mental illness highest among multiracial adults.



SAMHSA National Helpline
1-800-662-HELP(4357)
findtreatment.samhsa.gov

*U.S. Department of Health and Human Services. (2023, January 4). SAMHSA Announces National Survey on Drug Use and Health (NSDUH) Results Detailing Mental Illness and Substance Use Levels in 2021. Retrieved from <https://www.hhs.gov/about/news/2023/01/04/samhsa-announces-national-survey-drug-use-health-results-detailing-mental-illness-substance-use-levels-2021.html>



Poison Prevention

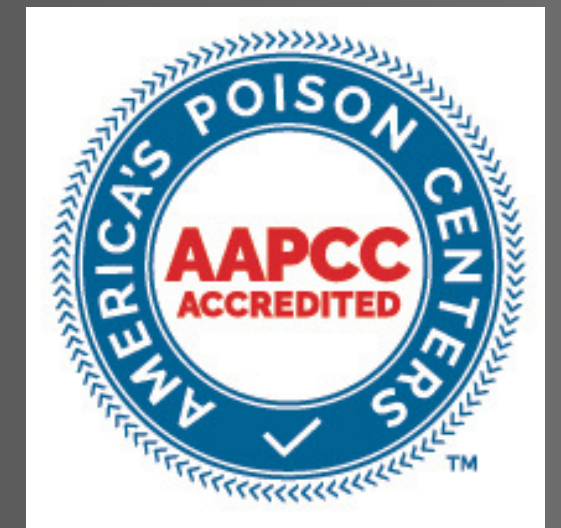
- Clinical toxicologists
- Specialists in Poison Information (SPI)
- Public Educators

Services

- Poison Helpline Call Center
- Clinical Toxicology Consultation Services
 - 24/7/365
- Education Outreach
 - Public
 - Healthcare Professionals



**MICHIGAN POISON & DRUG
INFORMATION CENTER**
WAYNE STATE UNIVERSITY



www.mipoisonhelp.org